

Document type		031160
Technical specification H-Series interceptor		
Date of issue	2019-12-10	
Version	PO1	

HUMPHREE®

HA-series Interceptor

The interceptor is machine grinded and assembled. The deployment is 50mm stroke. Shaft position in Asymmetric to the left or right of the interceptor. This interceptor is possible to custom



HA- Series

Construction:	Machine grinded
Inserts:	Composite(P) or metal(M) Metal should be used for boats faster than 50 knots
Fastening to hull	By 2-6 M8- X-X A4 screws L=75mm when use Humphree mounting plate, 20mm
75mm screw:	The 75mm screw will protrude xxm out on backside interceptor
Screw torque:	See drawing
Screw load:	See drawing
Transom hole:	60mm for the shaft
Blades:	2 blade
Material:	POM, POM is short for Polyoxymethylene. POM is characterized by its high strength, hardness and rigidity. It is a high-quality plastic for products with demanding requirements.
Weight:	See table
Sizes:	See table
Stroke length:	50 mm deployment
Transom thickness for shaft	80mm-140mm
Standard shaft:	Short shaft long shaft, see technical data for shaft
Optional shaft	See technical data for shaft
Maintenance schedule	Check interceptor for damage when you lift the boat, nothing direct to have maintenance schedule, see service schedule in operator's manual
Parts to maintain	If no cleaning mode on, clean the blades from organic growth when needed
Servo position	Mid and on side
Colour:	Black
Painting:	See painting instruction, but never spray paint the interceptor or paint blade.
Cleaning:	Do not use acid or base chemical which can harm the POM
Position of blade	When power off, the blade will retract.
Possibly to mix with other Humphree system:	Yes
Shipping in kit:	Yes, kit assembly for complete set.
Shipping as lose part	Yes
Options:	Custom is possible on HA0500 to HA0950 not on the others. Mounting plate on POM material or aluminium

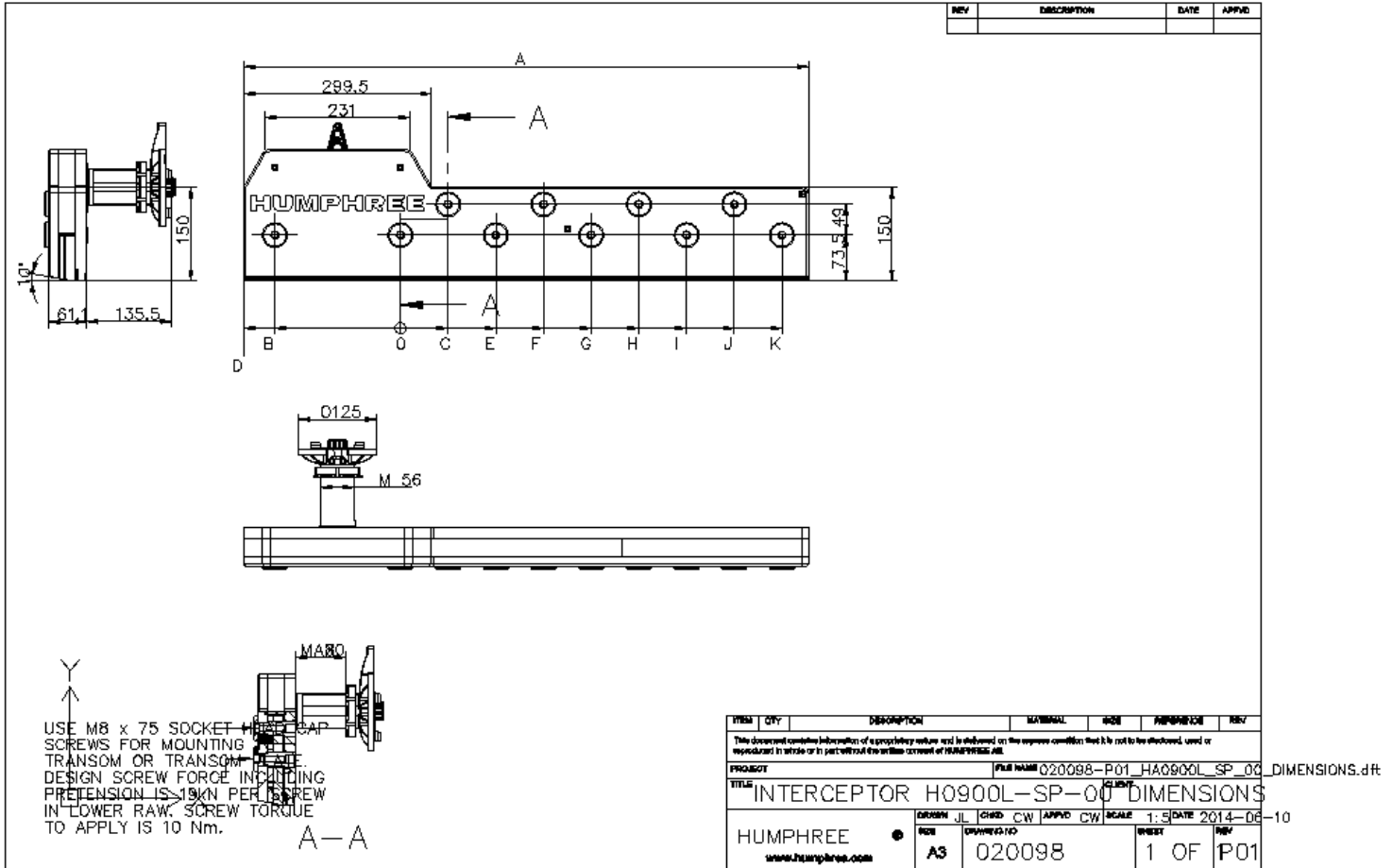
Document type		031160
Technical specification H-Series interceptor		
Date of issue	2019-12-10	
Version	P01	

HUMPHREE®

Drawings

HA interceptors

Example drawing



Interceptor	Measure A mm	Weight (kg)	Metal and plastic inserts	Left and Right	Number of mounting bolts
HA0500	500	6,5	Yes	Yes	See drawing
HA0600	600	7,5	Yes	Yes	See drawing
HA0750	750	9	Yes	Yes	See drawing
HA0800	800	9,5	Yes	Yes	See drawing
HA0850	850	10	Yes	Yes	See drawing
HA0900	900	10,5	Yes	Yes	See drawing
HA0950	950		Yes	Yes	See drawing
HA1000*	1000	11,5	Yes	Yes	See drawing
HA1050*	1050		Yes	Yes	See drawing
HA1100*	1100	12,5	Yes	Yes	See drawing

*note that servo boss is not same dimension as the other interceptors,