

Document type		031162
Technical specification HE-Series interceptor		
Date of issue	2019-12-10	
Version	P01	

HUMPHREE®

HE-Series interceptors

The interceptor is machine grinded and assembled. The deployment is 75mm stroke. Shaft position in centre of the interceptor. This interceptor is possible to custom



HE- Series.

Construction:	Machine milled
Inserts:	Composite(P) or metal(M) Metal should be used for boats faster than 50 knots
Fastening to hull	By 2-6 M8-X-X A4 screws L=75mm when use Humphree mounting plate, 20mm
Screw to mounting plate::	The 75mm screw will protrude xxm out on backside interceptor
Screw torque:	See drawing
Screw load:	See drawing
Transom hole:	60mm for the shaft
Blades:	2 blade
Material:	POM, POM is short for Polyoxymethylene. POM is characterized by its high strength, hardness and rigidity. It is a high-quality plastic for products with demanding requirements.
Weight:	See table
Sizes:	See table
Stroke length:	75 mm deployment
Transom thickness for shaft	80mm-140mm, see technical data for shaft for more lengths
Standard shaft:	Short shaft, long shaft
Optional shaft	See technical data for shaft
Maintenance schedule	Check interceptor for damage when you lift the boat, nothing direct to have maintenance schedule, see service schedule in operator's manual
Parts to maintain	If no cleaning mode on, clean the blades from organic growth when needed
Servo position	Mid and on side
Colour:	Black
Painting:	See painting instruction, but never spray paint the interceptor or paint blade.

Document type		031162
Technical specification HE-Series interceptor		
Date of issue	2019-12-10	
Version	P01	

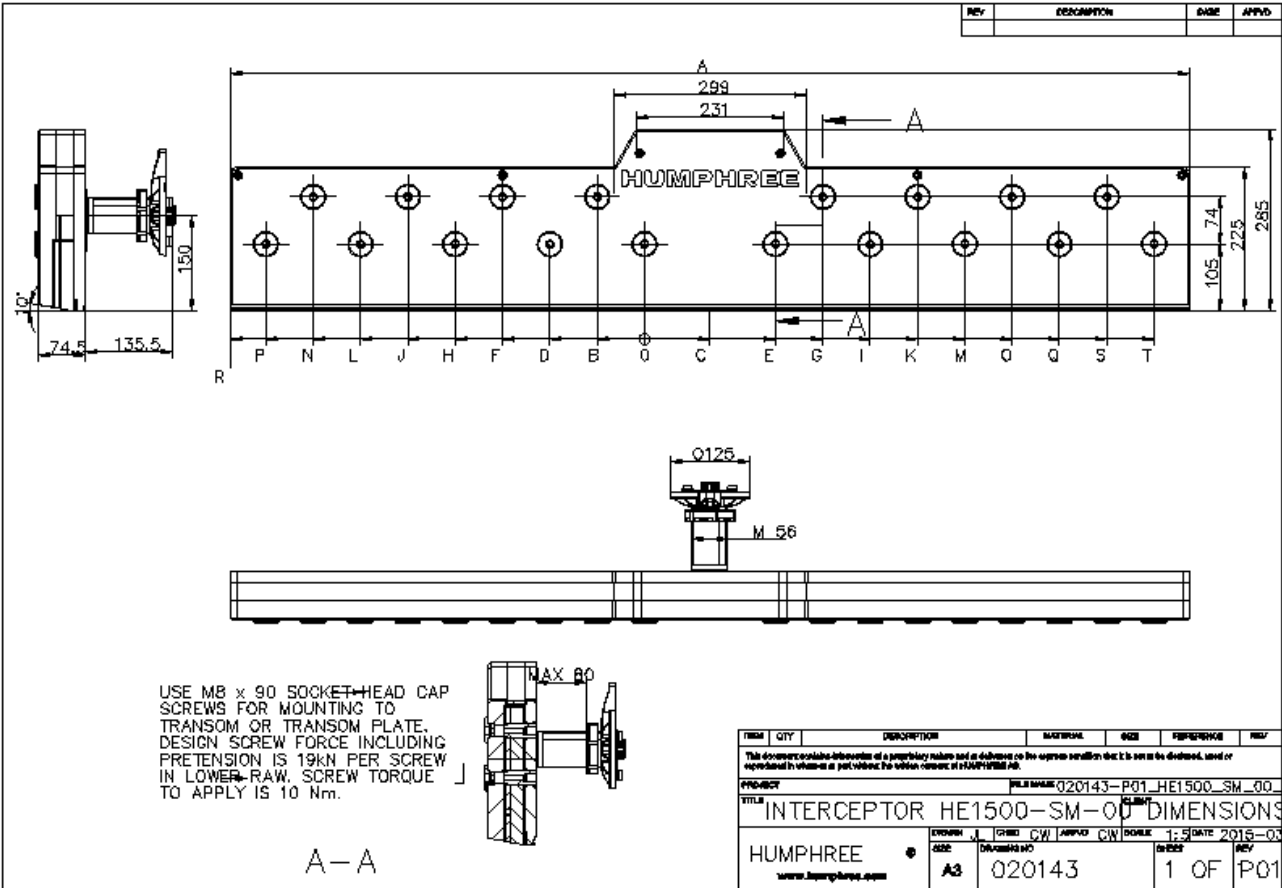
HUMPHREE®

Cleaning: Do not use acid or base chemical which can harm the POM
 Position of blade: When power off, the blade will retract.
 (on X series it could be a gap and it will not close 100%)
 Possibly to mix with other Humphree system: Yes
 Shipping in kit: Yes, kit assembly for complete set.
 Shipping as lose part: Yes
 Options: Custom is possible

Drawings

HE interceptor

Example drawing HE interceptor



Document type		031162
Technical specification HE-Series interceptor		
Date of issue	2019-12-10	
Version	PO1	

HUMPHREE®

Interceptor	Measure A mm	Weight	Metal and plastic inserts	Left and Right	Number of mounting bolts	
HE0750	750	16,5	Yes	Yes	See drawing	
HE0800	800	17,5	Yes	Yes	See drawing	
HE0850	850	18,5	Yes	Yes	See drawing	
HE0900	900	19,5	Yes	Yes	See drawing	
HE0950	950	20,5	Yes	Yes	See drawing	
HE1000	1000	21,5	Yes	Yes	See drawing	
HE1050	1050	22,5	Yes	Yes	See drawing	
HE1100	1100	23,5	Yes	Yes	See drawing	
HE1150	1150	24,5	Yes	Yes	See drawing	
HE1200	1200	25,5	Yes	Yes	See drawing	
HE1250	1250	27	Yes	Yes	See drawing	
HE1300	1300	27,5	Yes	Yes	See drawing	
HE1400	1400	29	Yes	Yes	See drawing	
HE1500	1500	31	Yes	Yes	See drawing	